

Worklinks Advisory Group - Ipswich – Tuesday 12 March 2013

Brother's Leagues Club
Raceview

Attendance:				
Name	Position	Organisation	Phone	Email
Amanda Margerison	Manager	Ipswich Community Youth Services	3812 1050	manager@icys.org.au
Andrew Peach	Principal	Bundamba Secondary College	3816 6333	apeac10@eq.edu.au
Anne McLaughlan	Principal	Lowood State High School	5427 8333	amcla17@eq.edu.au
Brent Cue	Partnership Manager	BEACON Foundation	0433 290 930	brent@beaconfoundation.net
David Murphy	Education Skills & Jobs Co-ordinator	DEEWR	3223 1827	davidmurphy@deewr.gov.au
Di Hockins	School Liaison Officer	Apprenticeships QLD	3281 9822	dianna@apprenticeshipsqld.com.au
Felicity Hill	Partnership Broker	Worklinks Partnership Brokers	3812 9921	felicityhill@worklinks.com.au
Honi	Senior Partnership Broker	Worklinks Partnership Brokers	3812 9921	honi@worklinks.com.au
Ian Maller	Area Supervisor	QCPCA	0427 631 658	dewlyn1@optusnet.com.au
Jessie Fraser	Social/Student Worker	Ipswich Flexible Learning Centre	3327 2288	JessieFraser@ereflc.org.au
John Sebire	Youth Connections Manager	Boystown	3288 4488	jsebire@boystown.com.au
Kate Toohey	Youth Development Officer	Ipswich City Council	3810 7437	ktoohey@ipswich.qld.gov.au
Kathleen Keighron	Facilitator/Trainer	Pathways to Resilience	0447 032339	community@pathwaystoresilience.org
Keith Bichel	Indigenous Pathways	DETE	3350 7812	keith.bichel@deta.qld.gov.au
Keith Debnam	Driving Mentor	Braking the Cycle	32812547	stephen.power@pcyc.org.au
Kyly Beauclere	Administration	Apprenticeships QLD	3281 9822	Kyly@apprenticeshipsqld.com.au
Leah Fontain	Deputy Principal	Bundamba State Secondary College	3816 6333	lfoun2@eq.edu.au
Lynn Shannon	Manager	Worklinks Partnership Brokers	3299 4798	lynnshannon@worklinks.com.au
Maria Griffin	Priority Area Employment	DEEWR	3223 1465	maria.griffin@deewr.gov.au

	Manager			
Marianne Watterson	HOD Senior School	Redbank Plains SHS	3432 1222	mwatt44@eq.edu.au
Michael Bozhoff	Acting Head of Department – Senior Schooling & HPE Sports Co-ordinator	Springfield Central State High School	3470 6222	mbozh2@eq.edu.au
Mike Parker	Manager	Goodna Youth Services	0418 181 308	gys@hotmail.com
Mike Winton	Co-ordinator, Choices not Chances Program	Redbank Plains State High School	3432 1222	mwint53@eq.edu.au
Rex Jorgensen	Apprentice Manager	QR National	0414 657 126	rex.jorgensen@qrnational.com.au
Robyn Goodwin	VET Co-ordinator	Westside Christian College	3437 9000	rgoodwin@wcc.qld.edu.au
Sally McGregor	Community Engagement	Salvation Army – Sony Centre	3280 8808	Sally.mcgregor@aue.salvationarmy.org
Shelly Davie	NDCO	CEA Group	0402 797 102	shelleyd@ceagroup.com.au
Stephen Power	Business Development Officer	Braking the Cycle	0468 846 322	stephen.power@pcyc.org.au
Steven Olssen	Senior Industry Training Consultant	Busy At Work	0429 497 954	stephen.olssen@busyinc.com.au
Sue Swanson	Business Development Officer	MEGT	38135444	susan_swanson@megt.com.au
Terri Tonkin	Contract Manager	DEEWR	3223 1028	terri.tonkin@deewr.gov.au
Vera Short	Indigenous Elder	Kambu Medical Services	0431 735 313	No email

Apologies:	
Name	Organisation
Lyn Culverhouse	Rosewood State High School
Ros Weatherhead	Rosewood State High School
Deidre Young	St Marys College

Norton Sands	Staines Memorial College
Megan Barkle	Construction Skills QLD
Raelene Bann	Mercy Family Services
John Williams	Soundpoint
Debbie Hardke	JBS Australia
Aletha Ward	Ipswich and West Moreton Health Alliance
Graeme Bridge	DEEWR
Jenny Chaves	Mission Australia
Kathryn Gossow	Dept of Communities
Lindy Hegarty	Bremer TAFE
Yvonne Schofield	DETE
Ray Power	DETE
Glen Watson	DETE

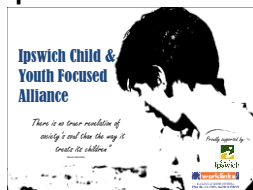
Meeting opened at 7:20am

1. Lynn Shannon, Manager – Worklinks Partnership Broker Program, welcomed everyone

Lynn welcomed all attendees. Lynn also acknowledged the Traditional Custodians of the land upon we were meeting. Lynn introduced both Felicity Hill and Honi to present the Partnership Broker Update.

2. Partnership Brokers update

- **Ipswich Child and Youth Focused Alliance and Brisbane Youth Valley Task Force**



NOTE: Please double click on the image (left) to see the presentation. Press esc to return to document.

For further information regarding the Youth Alliance please contact either:

Felicity Hill – Partnership Broker

T: 3812 9921

E: felicityhill@worklinks.com.au

Kate Toohey – Youth Development Officer – Ipswich City Council

T: 3810 747

E: ktoohey@ipswich.qld.gov.au

For further information regarding the Brisbane Valley Youth Taskforce, please contact:

Felicity Hill – Partnership Broker

T: 3812 9921

E: felicityhill@worklinks.com.au

- **Ipswich and West Moreton Health Alliance**

1. 1000 young people engaged in Health Alliance Initiatives
2. QHealth has committed further resources to the Health Alliance until mid 2014.
3. The Alliance held a Health Sector Workforce Development Forum on 28 Feb 13. The forum had a number of speakers including Prof Cath Rogers-Clark from USQ and Tanya Southworth from the Community Services and Health Industry Skills Council. Please see their escan on YouTube the highlights the prevalence of workforce development for Health and Community Services by doubling clicking on the following: <http://www.youtube.com/watch?v=UVtHfM2322E>
4. From the Forum – Solutions and scouting groups have been established – if you would like to be involved in any of the following please contact Aletha Ward on M: 041306540313 or via e: Aletha_Ward@health.qld.gov.au
 - a. Regional Workforce Development Solutions Group
 - b. School-based Trainees Solutions Group
 - c. Finance and Funding Scouting Group

- **Transitional Event for people with a disability**

- i. Shelly Davie – National Disability Coordinating Officer - gave a brief overview of the event to highlight the ‘transitional/inspirational’ event for people with a disability is for school aged young people along with adults with a disability – whether this be mental health barriers, learning difficulties etc – to access information and networks relating to employment, further study, volunteering etc. The event is being held on 24 July 2013 at the North Ipswich Reserve. The event will include a market place of community services, of employers, information on training and further education, along with volunteering information and opportunities. There will be inspirational guest speakers and lots of interaction. A planning committee for the event has been established, if you would like to become involved, please contact:

- a. Shelley Davie - NDCO

- M: 0402 797 102

- T: 3710 8106

- E: shelleyd@ceagroup.com.au

- b. Honi – Senior Partnership Broker

- M: 0458 990 243

- T: 3810 9921

- E: honi@worklinks.com.au

- **Braking the Cycle – Stephen Power – Business Development Officer**

Over the past few months BTC has continued to grow and with a fully operational program model the attention is now on sustainability and ongoing funding opportunities. In March 2013 the program received additional resources from DEEWR to begin the program in Goodna, Beenleigh and Creastmead, this will make a total of five sites operating in the Ipswich to Logan corridor.

The PCYC has formed a partnership with ACCESS and Reed in Partnership to base the program from in Goodna and aims to be fully operational from the 1st April.

The Ipswich Branch currently has 28 volunteers and three vehicles sponsored by Ipswich Pro Drive, Qld Bluelight and Ipswich Central Motors. We are providing an average of 200 supervised driving hours per month and have successfully assisted with 11 licences. In Ipswich there has been a 70% employment or education outcome from the program and many of the youth are actively working on life style improvements.

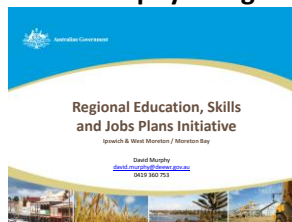
With the program reaching capacity for three vehicles we are on the look out for another vehicle partnership and more volunteer mentors which would enable the program to provide an additional 50 hours per week. For further information: please contact Stephen Power – m: 0468 846 322 or e: stephen.power@pcyc.org.au fb: www.facebook.com/pcycbrakingthecycle

3. Guest Speakers

i. Sound Point Centre Goodna – Sally McGregor

1. Sally introduced to the group the newly opened space in Goodna, Sound Point Centre, that came from substantial financial support from Sony after the floods last year. Sally mentioned it is a one stop shop for young people and the community with a state of the art sound studio, computers, innovative spaces, salvation army shop etc.
2. Please contact Sally directly if you would like any further information, t: 3280 8808 or e: Sally.mcgregor@aue.salvationarmy.org

ii. David Murphy – Regional Education, Skills and Jobs Coordinator - DEEWR



NOTE: Please double click on the image (left) to see the presentation.

4. Notice Board

- **Measuring and Reporting Soft Outcomes** – a workshop being held on 25th March 9:30am to 12:30pm – Humanities Centre – Ipswich. Please click on the pdf to view the registration form. For further information please contact: Bridget Coyne M: 0431 202 987 e: inspireinq@gmail.com
- **RAGE** – Rage is an anger management course for young people aged between 11 and 17. This is a strengths based, solutions focused program this is hands on, practical and heaps of fun. For more information, please click on: www.interventionsplus.com.au
- **Ipswich City Library- Life Long Learning** – anyone is welcome to join, it is free. Being a member of Ipswich City Library opens you to a world of free non-accredited online training, learning a new language, downloading music, movies and books, and much much more. To find out how the library may be of benefit to you personally, to your family, in the great work you do, in particular if you provide services to young people,

those who are young at heart and all points in between – please call the library on – t: 3810 6815 e: info@library.ipswich.qld.gov.au
w: www.library.ipswich.qld.gov.au fb: facebook.com/IpswichLibrary

5. “2 Minute Mic”

- **Mike Winton – Redbank Plains High**

- | | | |
|---------|---|---|
| i. 2012 | 13 participated in T&L
4 participated in admin T&L
13 participated Cert II T&L
2 Business | 10 gained employment directly from school
2 gained employment
12 gained qualification (one broke his leg) |
| 2013 | 31 participating in program
5 businesses our area
Redbank Plains, Kingston, Wavell, Sandgate and Bracken Ridge involved in 2013
10 T&L businesses involved in 2013 across Brisbane | |

- **Keith Bichel – Indigenous Pathways Coordinator – DETE**

- please double click on the following for Keith’s update



2010-12 Destination
Comparison for Work

- **Amanda Magerison – Manager – Ipswich Community Youth Service**

- ICYS Intake Worker – Leanne Stephens – Leanne is not a case worker but a referral point – if you have a client (young person/family) who you are not sure were to refer phone Leanne at ICYS on 3812 1050
- ICYS will be running activities for intellectually disabled young people a couple of afternoons per week contact Kahli Williams 3812 1050. ICYS lost funding for their young disability programs but this is such an important initiative that ICYS are running this program themselves. Good news is that it doesn’t come with restrictive funding criteria.
- YSC Conference – Your Strategies and Choices Conference - inspirational career and transition conference for young people - in its 7th year and will be held on May 29th & 30th – if you would like to be involved please contact Sarah Lehman at ICYS on 3812 1050

- **Kathleen Keighron – Pathways to Resilience**
 - The Pathways to Resilience Trust is a charitable organisation established in August 2007 with the specific aim of promoting resilience in children, adolescents and families and to assist in the prevention of anxiety, depression and youth suicide. This is facilitated through the implementation of world renowned resilience programs in Australian schools and communities of low socio-economic status; culturally and linguistically diverse backgrounds: indigenous heritage; and from regional and remote areas; including those affected by drought or natural disasters. If you would like to see how the program would assist the great work you are already doing with young people and their families, please contact Kathleen on t: 3169 2400 e: community@pathwaystoresilience.org w: www.pathwaystoresilience.org/
- **Kate Toohey – Youth Development Officer – Ipswich City Council** - please go onto the Ipswich City Council Website for more information.
 - **Youth Forum**
 - http://www.ipswich.qld.gov.au/documents/marketing/swichon_youth_forum_2013.pdf
 - **Youth Film Festival**
 - http://www.ipswich.qld.gov.au/documents/marketing/iffy_promotional_flyer.pdf

6. 8:40am - Close of meeting and networking